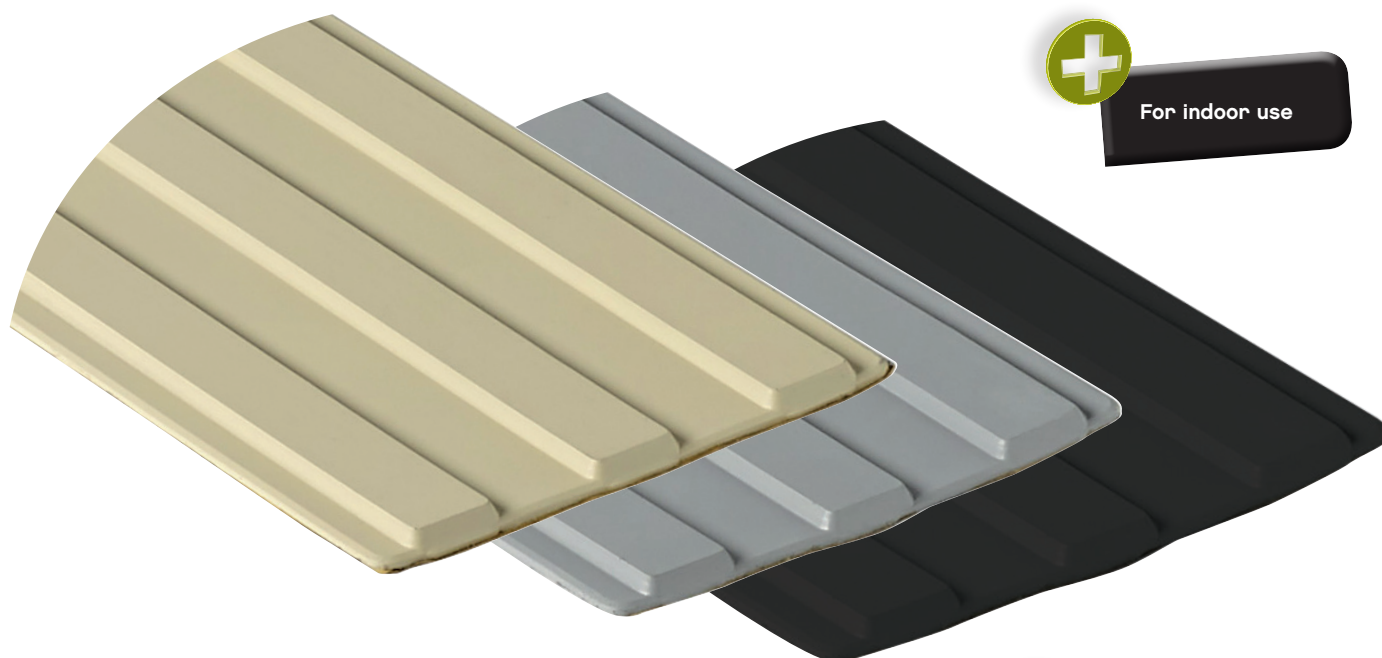


Technical Data Sheet - GB



For indoor use

STRIP DIMENSIONS: 100 x 17.5 cm
THICKNESS: 5.3 mm



Self-adhesive

PRODUCT DESCRIPTION

TACTILINE GUIDE STRIP is an on-ground orientation system allowing the blind and the partially sighted to find their

way from a point A to a point B, indoors or outdoors.

- Public buildings
- Halls, ticket offices
- Flights of stairs

Its grooves can be detected by foot or a white stick.

This device comes within the scope of Act n° 91-663 of July 13, 1991, Accessibility for people with disabilities, and of Decree n° 99-756 of August 31, 1999.

From January 1st, 2015, all public establishments must be entirely accessible to people with disabilities. Regulations on accessibility require that public establishments (ERP) meet accessibility requirements and standards in 2015.

Accessibility must be global and understood in a broad sense. Physical, intellectual and sensorial dimensions should all be considered.

Technical Data Sheet - GB

TECHNICAL SPECIFICATIONS

TACTILINE GUIDE STRIP is made of **polyurethane resin**

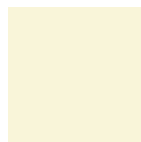
Strip properties:

- Fire rating: M2 - (Euroclasses «C»)
- High elasticity
- Easy installation
- Good tear resistance
- Highly nonslip
- Anti-fouling

Self-coloured, **TACTILINE GUIDE STRIPS** exist in different colours:



RAL 7040



RAL 1015



BLACK

INSTALLATION

SELF-ADHESIVE SYSTEM:

Cleaning: The substrate should be clean, dry and free from any non-adherent material (dust, grit, grease, oil, etc.), perfectly smooth (tiles, resin flooring, epoxy, asphalt, parquet, smooth concrete, soft flooring...).

Application steps:

- Establish the application area
- Remove the film from the back of the strip
- Place the strip
- Apply some light pressure so as to avoid air bubbles.
- Check that strip edges stick well to the support.

In the case of an irregular substratum, level it so as to ensure a better adhesion of the STRIP.

Example: Tiling joints should be filled with tile adhesive. Do not apply the STRIP until the adhesive is completely dry.

ADDITIONAL DATA

Storage: 1 year in original unopened container protected from moisture and freezing.